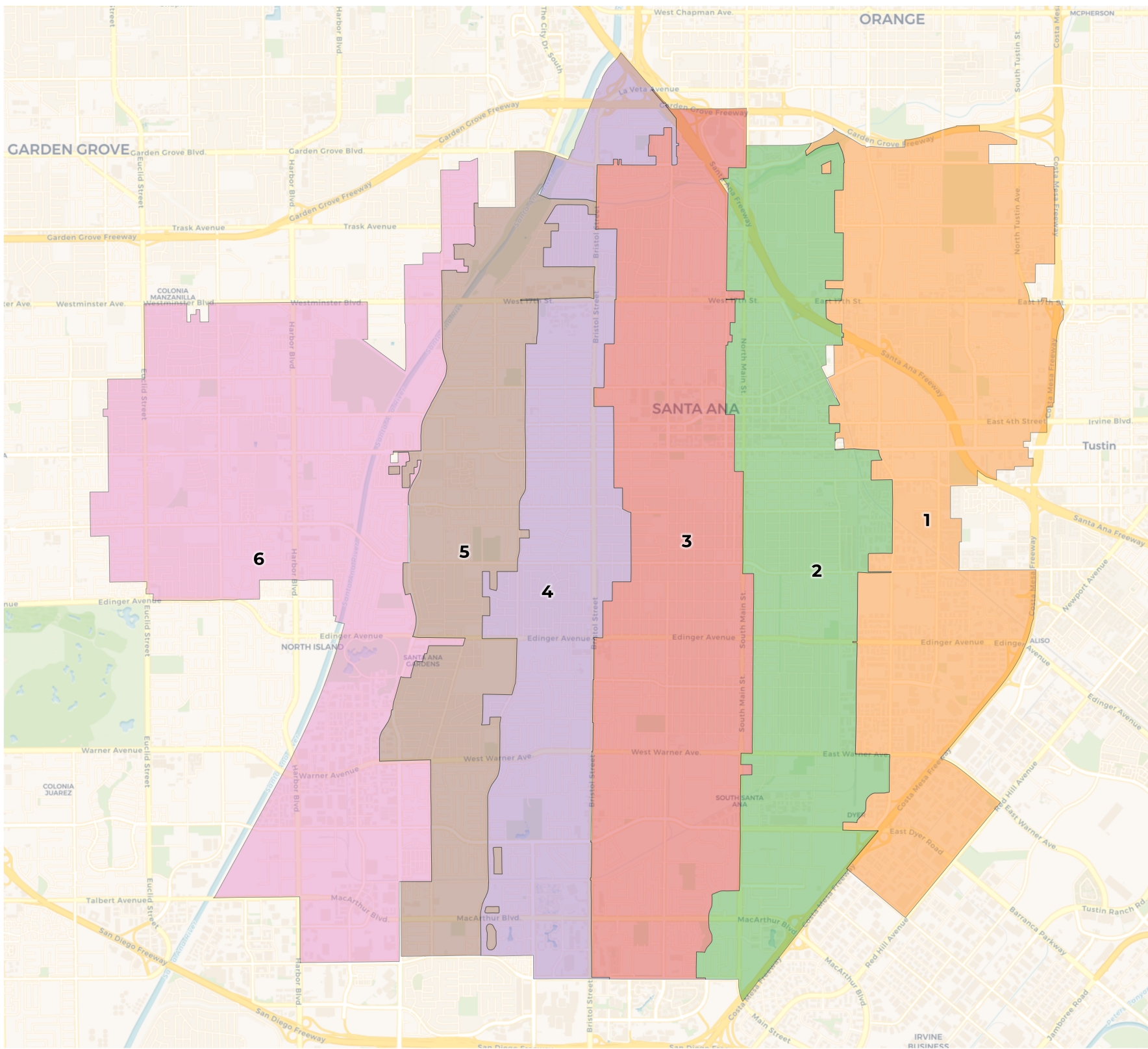




REDISTRICTING PARTNERS

Santa Ana

ID86638



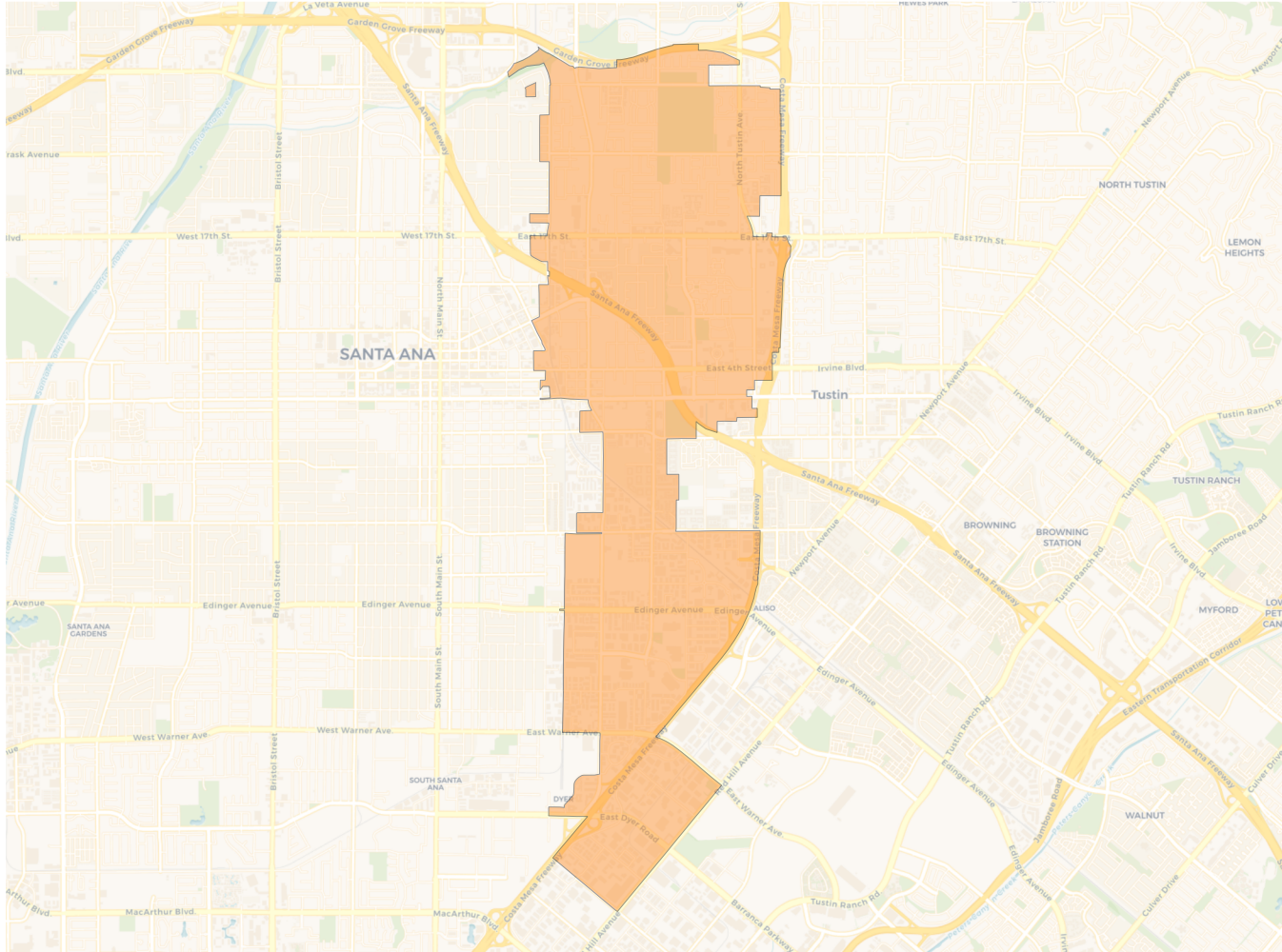
2020 Census

	1	2	3	4	5	6
Population	32,508	54,140	72,226	46,632	44,269	61,142
Deviation	-19,312	2,320	20,406	-5,188	-7,551	9,322
Deviation %	-37.3%	4.5%	39.4%	-10.0%	-14.6%	18.0%
Other	6,212	5,180	8,891	4,429	3,155	4,302
Other %	19.1%	9.6%	12.3%	9.5%	7.1%	7.0%
Latino	23,909	45,952	58,095	37,328	36,235	36,979
Latino %	73.5%	84.9%	80.4%	80.0%	81.9%	60.5%
Asian	1,980	2,654	4,481	4,374	4,510	19,439
Asian %	6.1%	4.9%	6.2%	9.4%	10.2%	31.8%
Black	407	354	759	501	369	422
Black %	1.3%	0.7%	1.1%	1.1%	0.8%	0.7%

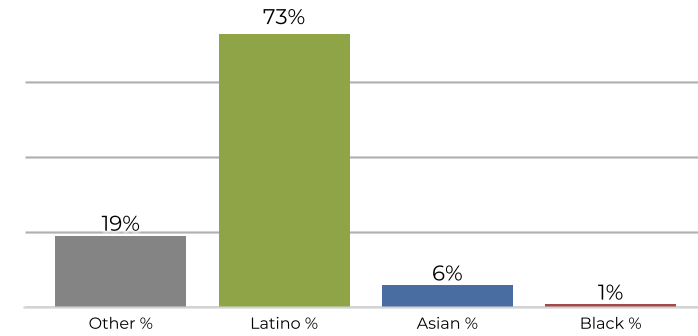
Citizen Voting Age Population (CVAP)

	1	2	3	4	5	6
Total CVAP	18,232	25,057	37,346	24,782	20,929	34,969
Other CVAP	6,791	4,503	7,960	3,952	3,114	3,789
Other CVAP %	37.2%	18.0%	21.3%	15.9%	14.9%	10.8%
Latino CVAP	9,593	18,488	25,816	17,239	14,020	17,305
Latino CVAP %	52.6%	73.8%	69.1%	69.6%	67.0%	49.5%
Asian CVAP	1,193	1,809	3,120	3,219	3,421	13,642
Asian CVAP %	6.5%	7.2%	8.4%	13.0%	16.3%	39.0%
Black CVAP	655	257	450	372	374	233
Black CVAP %	3.6%	1.0%	1.2%	1.5%	1.8%	0.7%

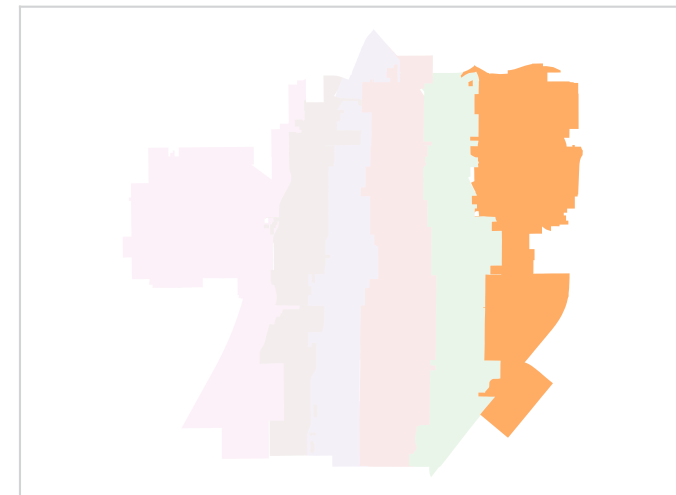
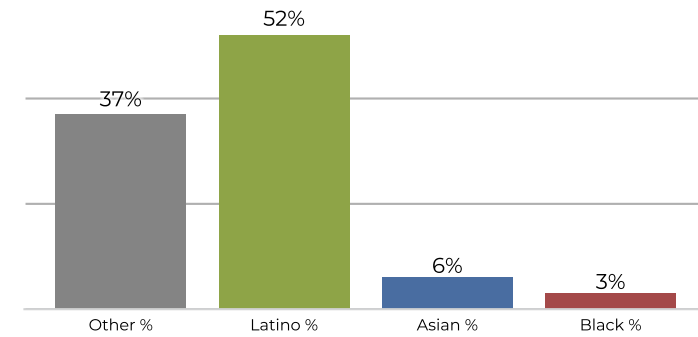
District 1



2020 Census

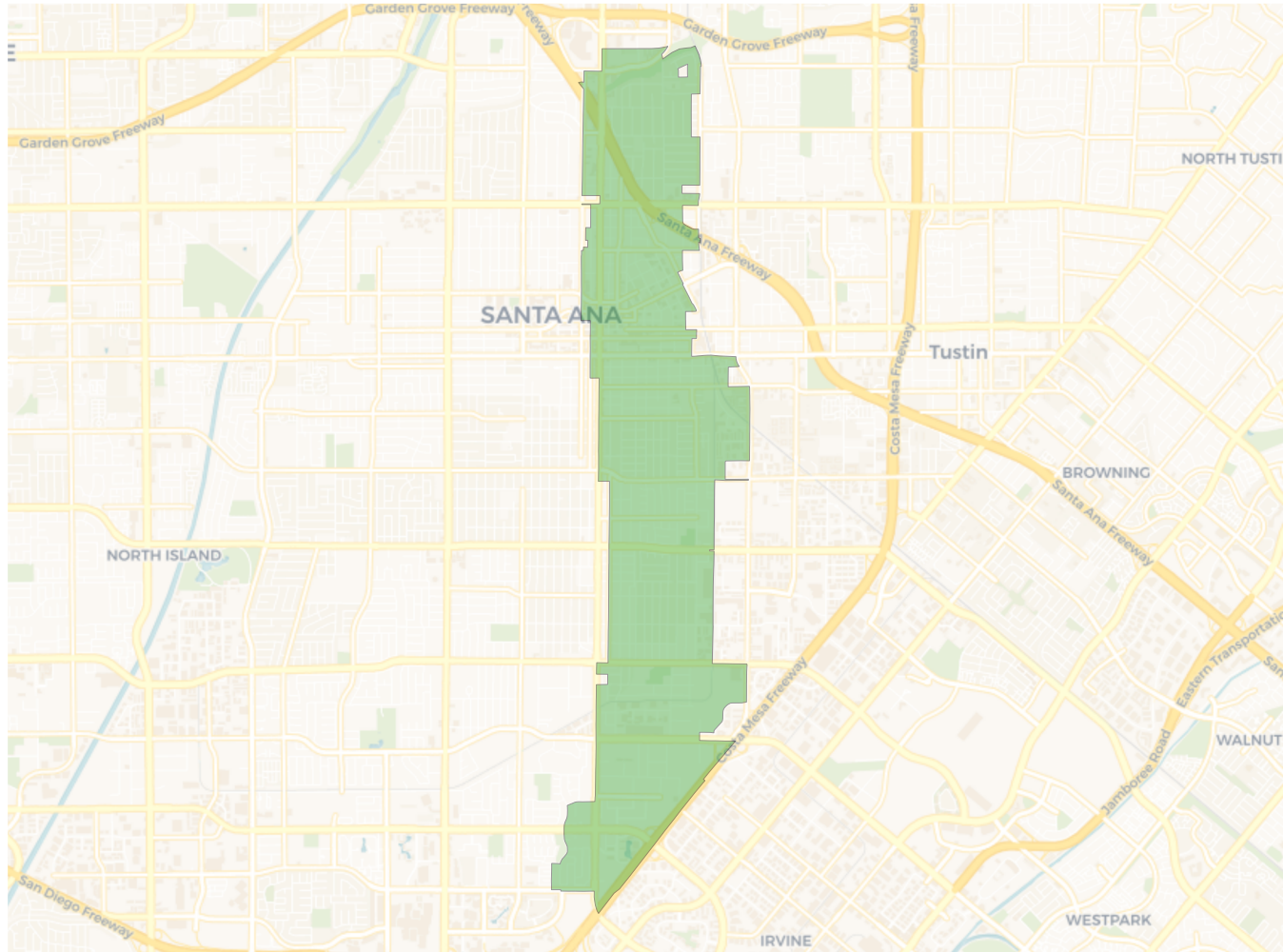


Citizen Voting Age Population

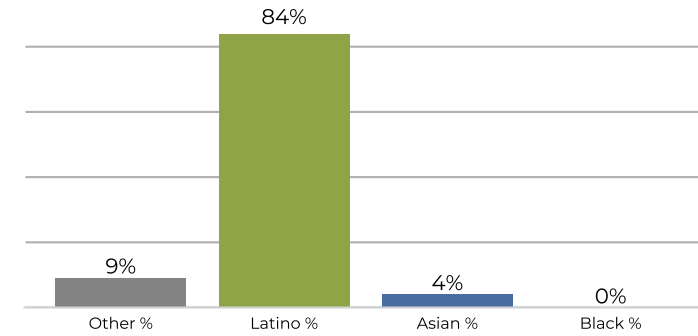


Population	Deviation	Deviation %	Other	Other %	Latino	Latino %	Asian	Asian %	Black	Black %
32,508	-19,312	-37.3%	6,212	19.1%	23,909	73.5%	1,980	6.1%	407	1.3%
Total CVAP	Other CVAP	Other CVAP %	Latino CVAP	Latino CVAP %	Asian CVAP	Asian CVAP %	Black CVAP	Black CVAP %		
18,232	6,791	37.2%	9,593	52.6%	1,193	6.5%	655	3.6%		

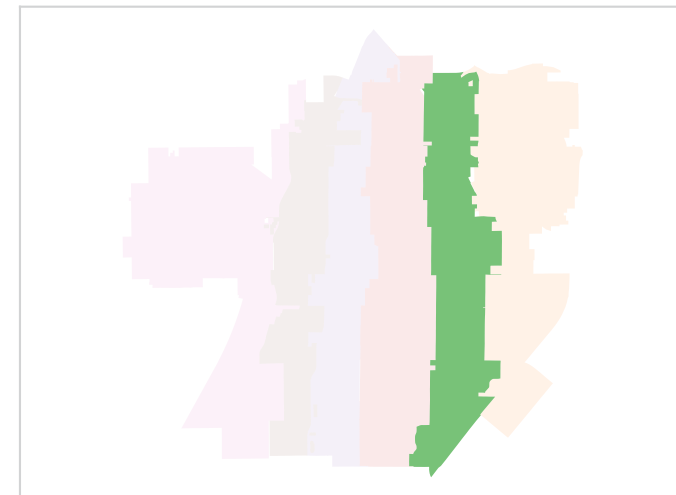
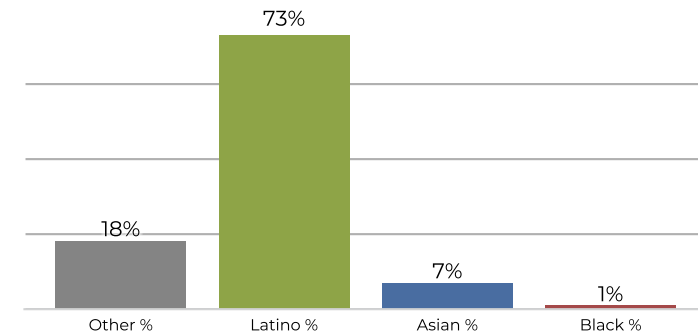
District 2



2020 Census

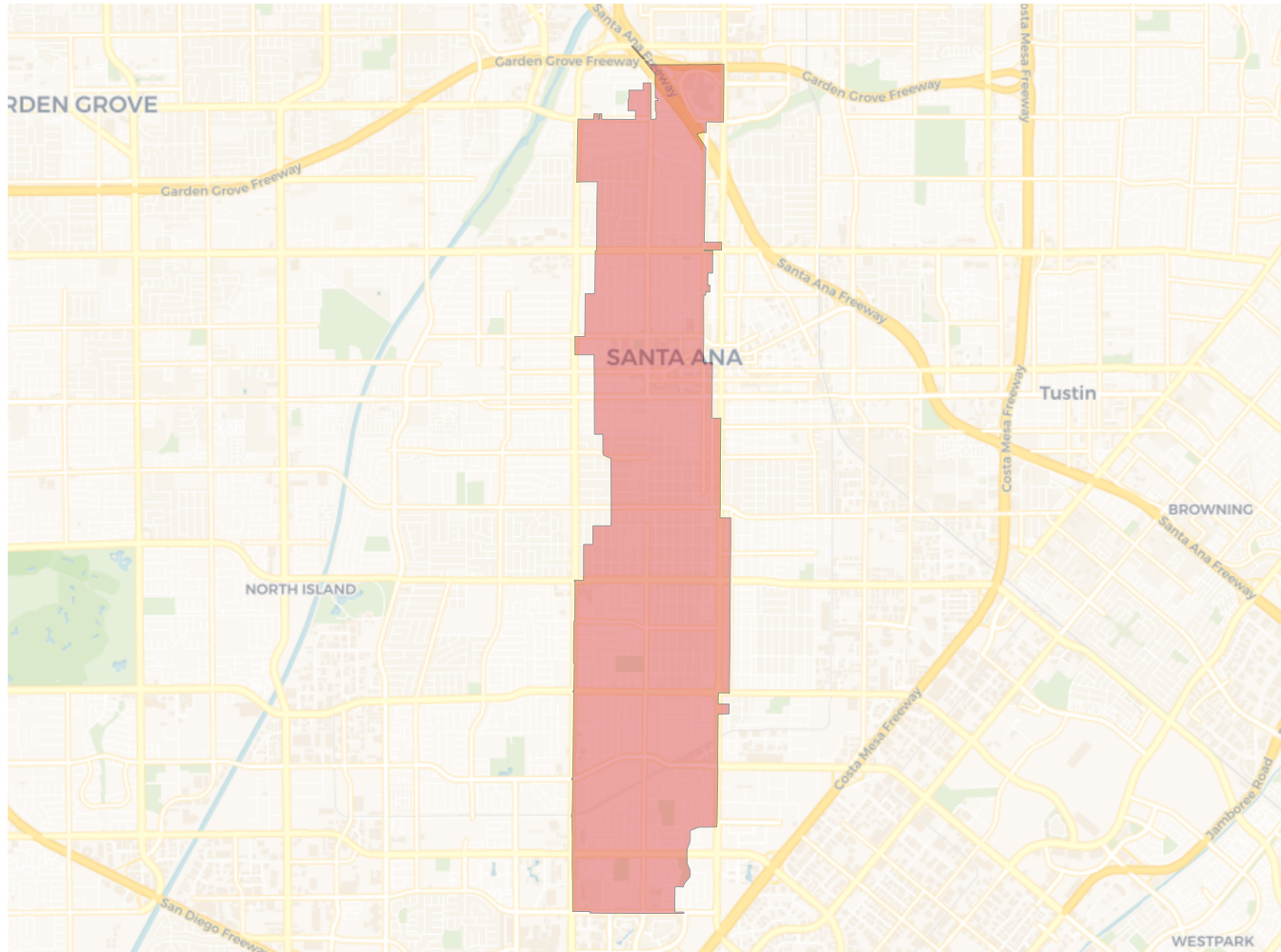


Citizen Voting Age Population

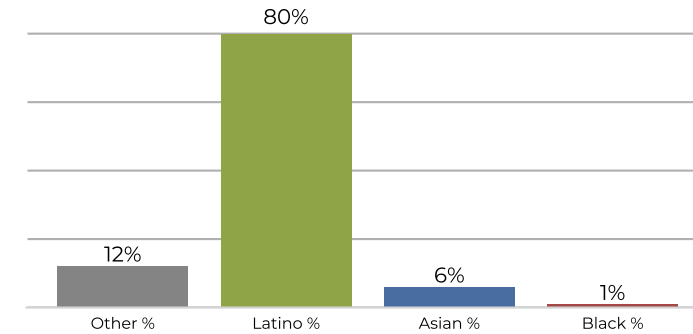


Population	Deviation	Deviation %	Other	Other %	Latino	Latino %	Asian	Asian %	Black	Black %
54,140	2,320	4.5%	5,180	9.6%	45,952	84.9%	2,654	4.9%	354	0.7%
Total CVAP	Other CVAP	Other CVAP %	Latino CVAP	Latino CVAP %	Asian CVAP	Asian CVAP %	Black CVAP	Black CVAP %		
25,057	4,503	18.0%	18,488	73.8%	1,809	7.2%	257	1.0%		

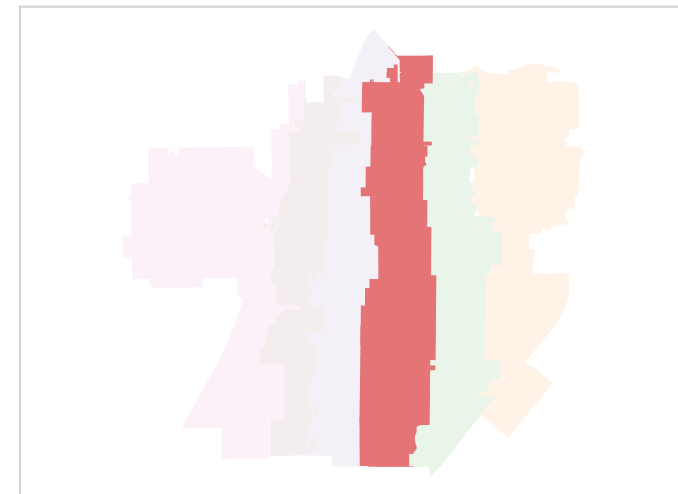
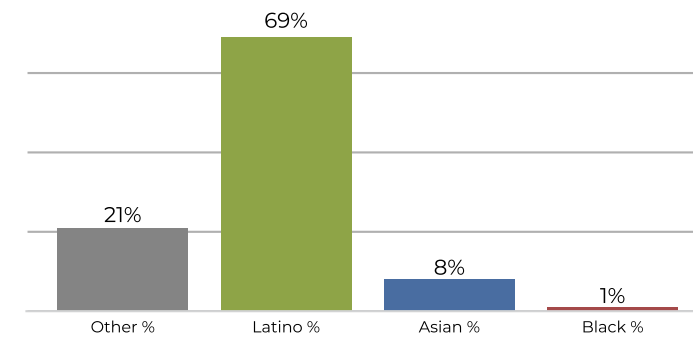
District 3



2020 Census

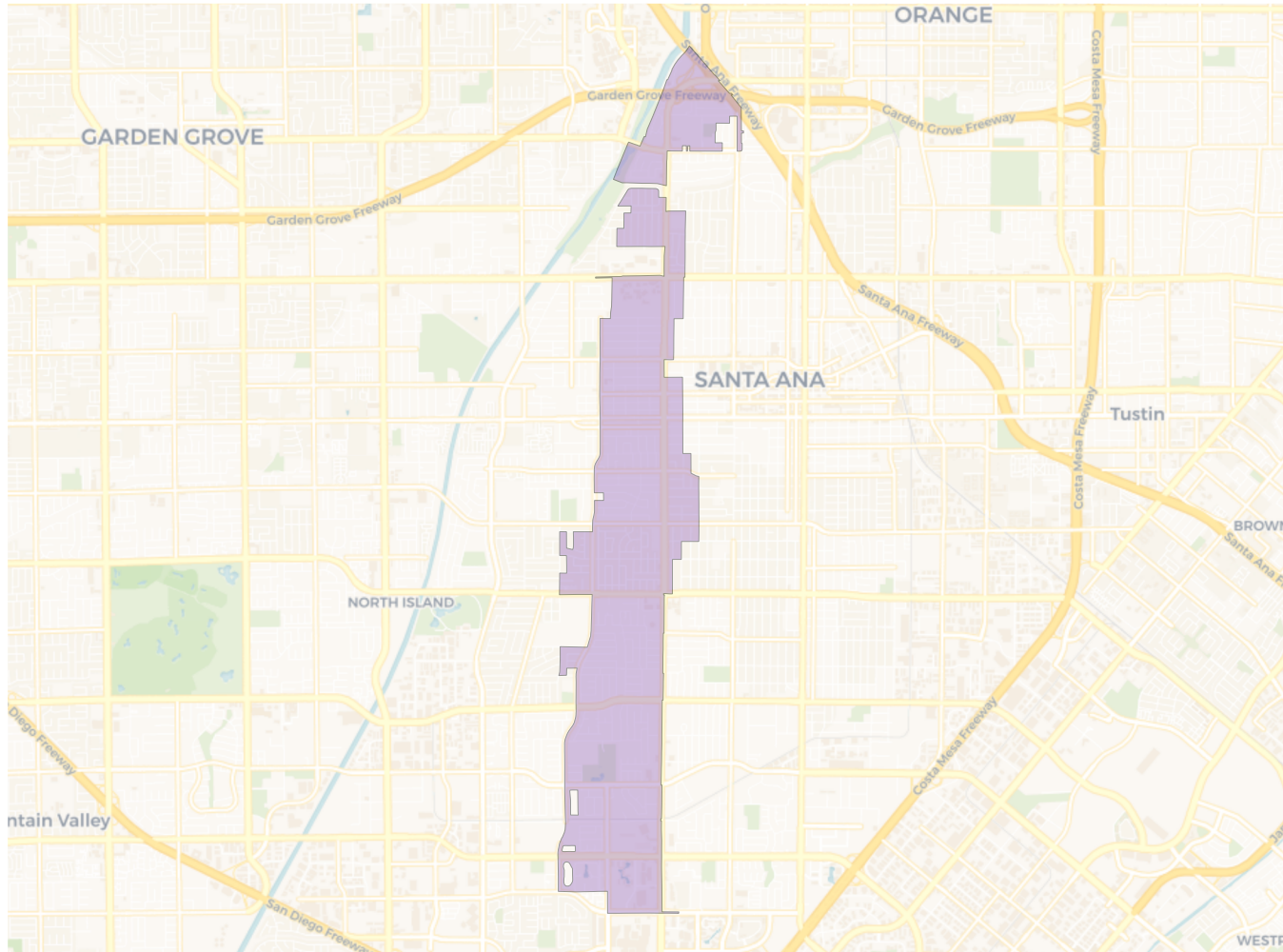


Citizen Voting Age Population

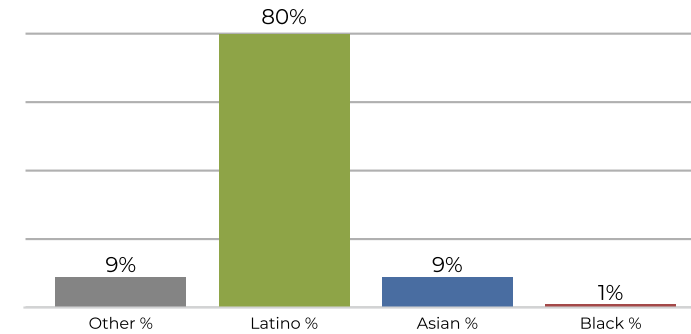


Population	Deviation	Deviation %	Other	Other %	Latino	Latino %	Asian	Asian %	Black	Black %
72,226	20,406	39.4%	8,891	12.3%	58,095	80.4%	4,481	6.2%	759	1.1%
Total CVAP	Other CVAP	Other CVAP %	Latino CVAP	Latino CVAP %	Asian CVAP	Asian CVAP %	Black CVAP	Black CVAP %		
37,346	7,960	21.3%	25,816	69.1%	3,120	8.4%	450	1.2%		

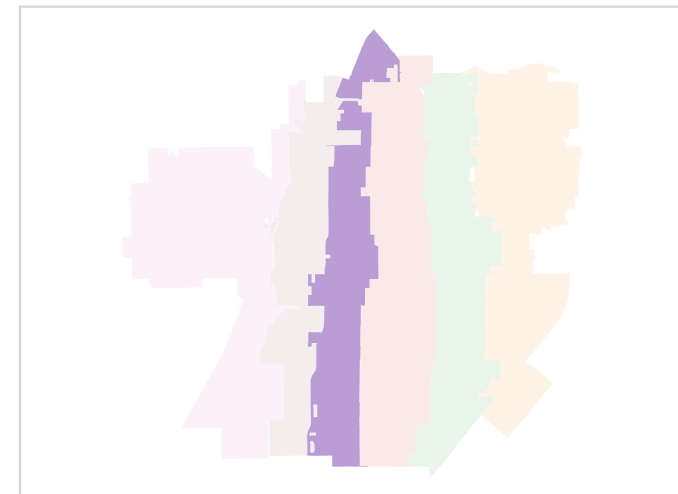
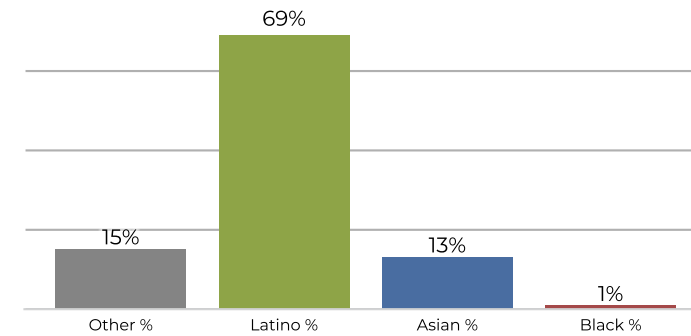
District 4



2020 Census

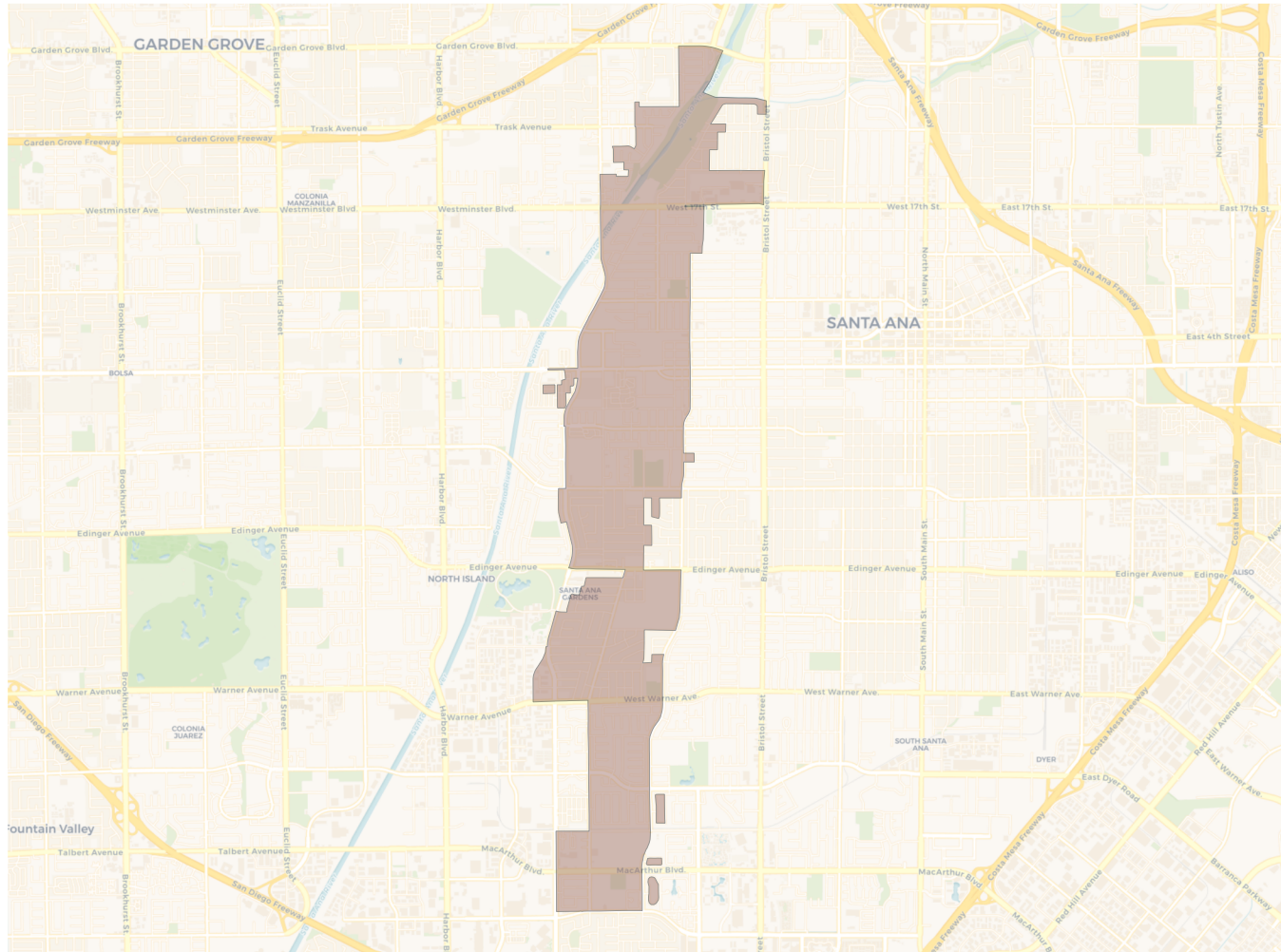


Citizen Voting Age Population

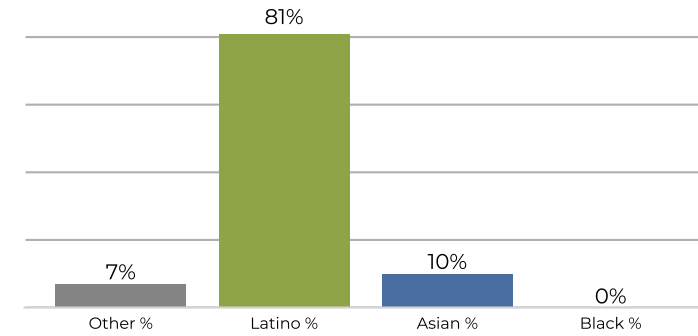


Population	Deviation	Deviation %	Other	Other %	Latino	Latino %	Asian	Asian %	Black	Black %
46,632	-5,188	-10.0%	4,429	9.5%	37,328	80.0%	4,374	9.4%	501	1.1%
Total CVAP	Other CVAP	Other CVAP %	Latino CVAP	Latino CVAP %	Asian CVAP	Asian CVAP %	Black CVAP	Black CVAP %		
24,782	3,952	15.9%	17,239	69.6%	3,219	13.0%	372	1.5%		

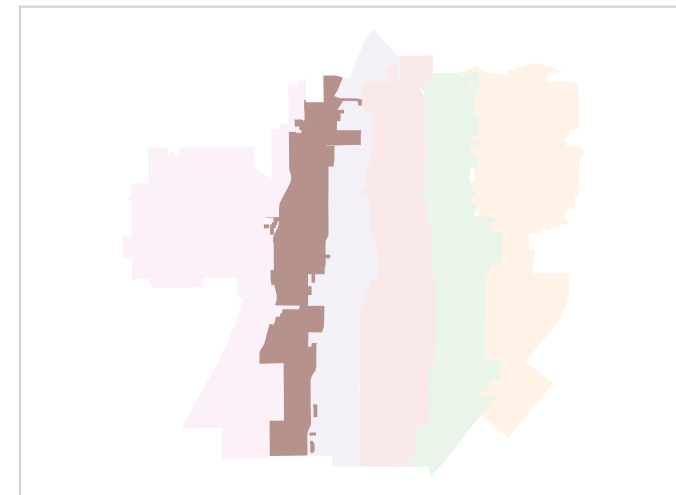
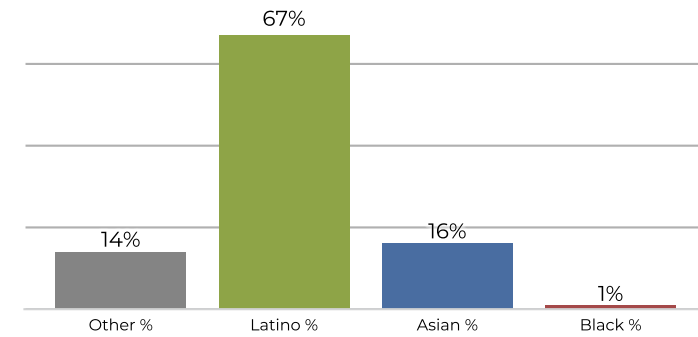
District 5



2020 Census

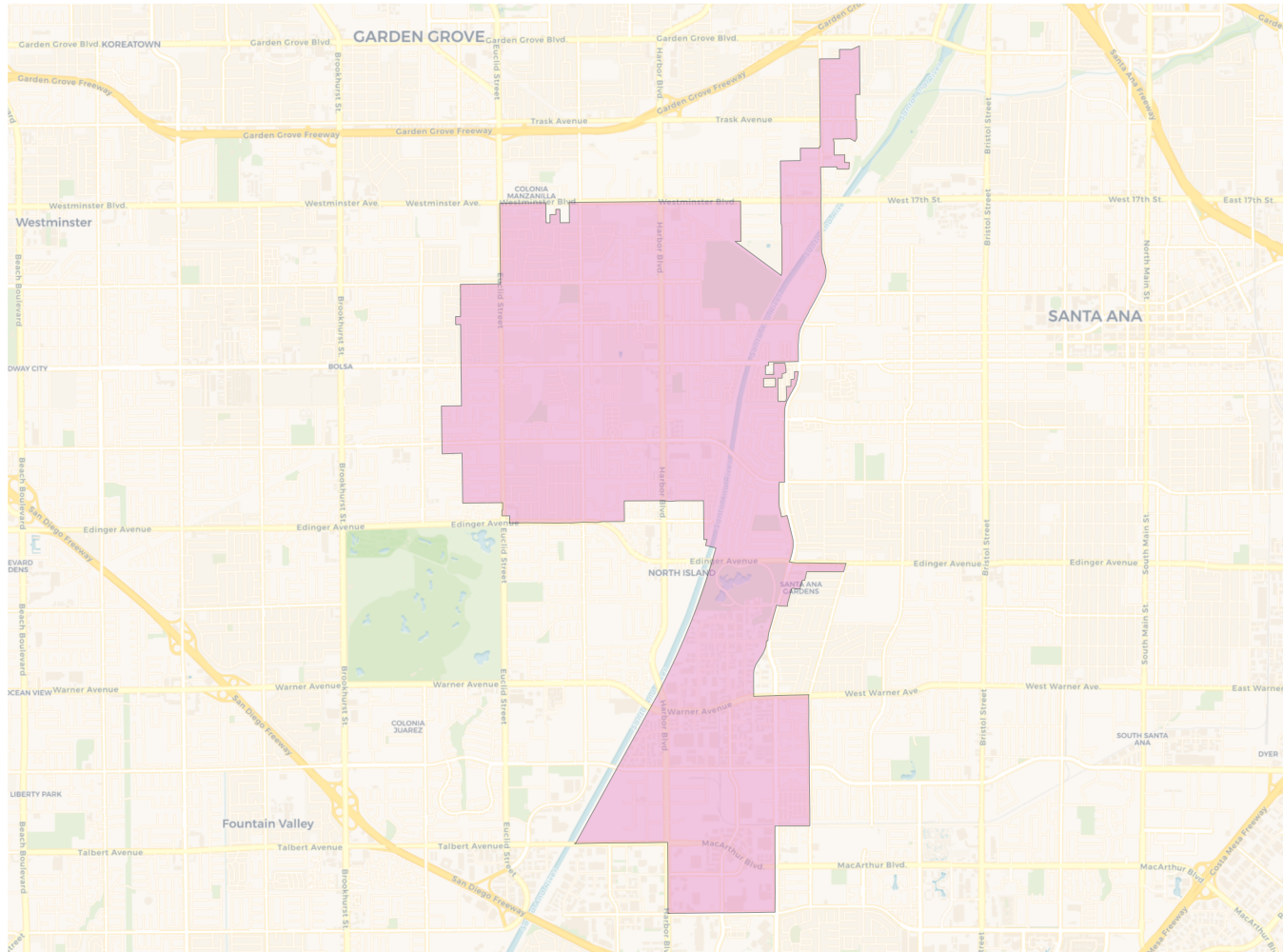


Citizen Voting Age Population

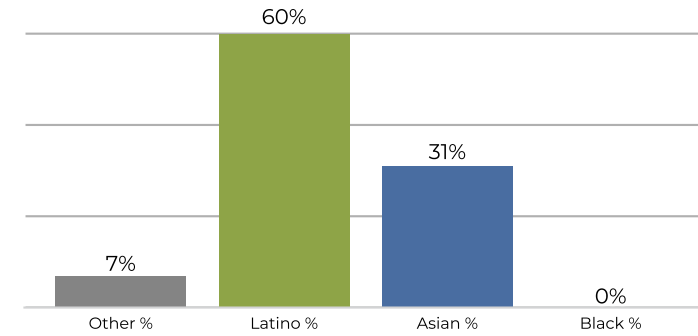


Population	Deviation	Deviation %	Other	Other %	Latino	Latino %	Asian	Asian %	Black	Black %
44,269	-7,551	-14.6%	3,155	7.1%	36,235	81.9%	4,510	10.2%	369	0.8%
Total CVAP	Other CVAP	Other CVAP %	Latino CVAP	Latino CVAP %	Asian CVAP	Asian CVAP %	Black CVAP	Black CVAP %		
20,929	3,114	14.9%	14,020	67.0%	3,421	16.3%	374	1.8%		

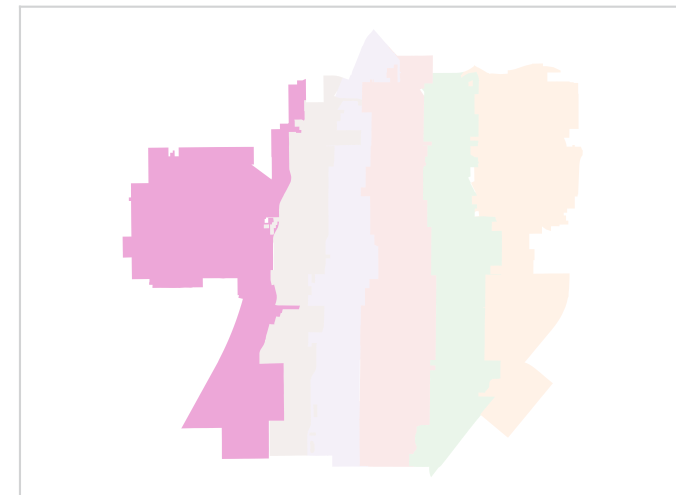
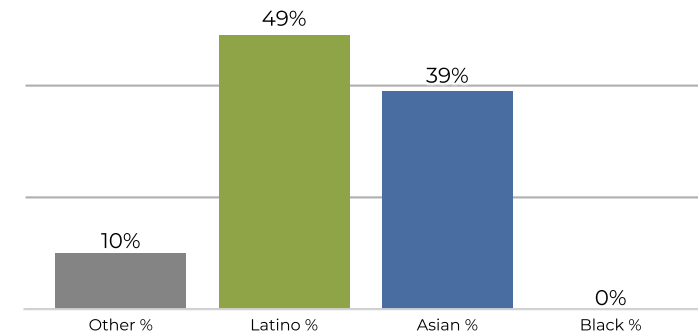
District 6



2020 Census



Citizen Voting Age Population



Population	Deviation	Deviation %	Other	Other %	Latino	Latino %	Asian	Asian %	Black	Black %
61,142	9,322	18.0%	4,302	7.0%	36,979	60.5%	19,439	31.8%	422	0.7%
Total CVAP	Other CVAP	Other CVAP %	Latino CVAP	Latino CVAP %	Asian CVAP	Asian CVAP %	Black CVAP	Black CVAP %		
34,969	3,789	10.8%	17,305	49.5%	13,642	39.0%	233	0.7%		